

# WaterHog® Mats

Entrance / Scraper-Wiper / Indoor-Outdoor



WaterHog mats are durable, stain-resistant mats with a unique bi-level design that traps dirt and moisture, keeping your floors clean, dry, and safe.

- **Clean & Dry** – Bi-level surface effectively scrapes dirt and moisture from shoes, trapping it beneath shoe level to prevent tracking; water dam border holds moisture keeping it off your floors (WaterHog mats can hold up to 1 ½ gallons of water per square yard)
- **Durable** – Reinforced rubber nubs prevent pile from crushing and extend the performance life of the mat
- **Fade & Stain Resistant** – Solution-dyed polypropylene fabric is resistant to staining, dries quickly, and will not fade or rot
- **Safe** – Beveled edges provide a safe transition from floor to mat; certified high-traction by the National Floor Safety Institute (NFSI)
- **Eco-Friendly** – Rubber backing contains 20% post-consumer recycled rubber from car tires
- Available in 19 colors with choice of Classic (rubber) border or Fashion (fabric) border
- Feature 78-mil SBR rubber with universal cleated backing or smooth backing; available with optional Anchor Safe® nitrile rubber backing on classic border mat only



\*These colors are available in 3' and 4' widths only.





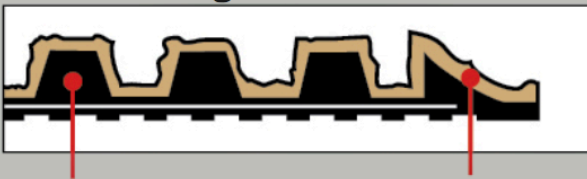
### WaterHog - Classic Border



Rubber reinforced textile Rubber border



### WaterHog - Fashion Border



Rubber reinforced textile Fabric Border



## WaterHog® Mats

Entrance / Scraper-Wiper / Indoor-Outdoor

### Product No. 200, Classic Border

Size (ft.)	Size (in.)	Shipping Weight
18" x 27"	18" x 27"	3 lbs.
2' x 3'	23" x 35"	5 lbs.
3' x 4'	35" x 45"	8 lbs.
3' x 5'	35" x 58"	11 lbs.
3' x 8'	35" x 96"	17 lbs.
3' x 10'	35" x 116"	20 lbs.
3' x 12'	35" x 142"	24 lbs.
3' x 16'	35" x 189"	32 lbs.
3' x 20'	35" x 236"	40 lbs.
4' x 6'	45" x 69"	16 lbs.
4' x 8'	45" x 96"	21 lbs.
4' x 10'	45" x 116"	26 lbs.
4' x 12'	45" x 142"	31 lbs.
4' x 16'	45" x 189"	41 lbs.
4' x 20'	45" x 236"	51 lbs.
6' x 8'	70" x 95"	32 lbs.
6' x 12'	70" x 142"	48 lbs.
6' x 16'	70" x 189"	63 lbs.
6' x 20'	70" x 236"	79 lbs.

**Note:** Available in special sizes with widths of 3' (35"), 4' (45"), and 6' (70") and lengths up to 60'.

Mats up to 40' are available with universal cleated or smooth backing.

Mats over 40' are only available with smooth backing.

Anchor Safe® backing available up to 20'. It features 100 mil nitrile rubber and is a 30% upcharge.

## WaterHog® Mats

Entrance / Scraper-Wiper / Indoor-Outdoor

### Product No. 280, Fashion Border

Size (ft.)	Size (in.)	Shipping Weight
18" x 27"	18" x 27"	3 lbs.
2' x 3'	23" x 35"	5 lbs.
3' x 4'	35" x 45"	8 lbs.
3' x 5'	35" x 59"	11 lbs.
3' x 8'	35" x 96"	17 lbs.
3' x 10'	35" x 116"	20 lbs.
3' x 12'	35" x 142"	24 lbs.
3' x 16'	35" x 189"	32 lbs.
3' x 20'	35" x 235"	40 lbs.
4' x 6'	45" x 69"	16 lbs.
4' x 8'	45" x 96"	21 lbs.
4' x 10'	45" x 116"	26 lbs.
4' x 12'	45" x 142"	31 lbs.
4' x 16'	45" x 189"	41 lbs.
4' x 20'	45" x 235"	51 lbs.
6' x 8'	70" x 95"	32 lbs.
6' x 12'	70" x 142"	48 lbs.
6' x 16'	70" x 189"	63 lbs.
6' x 20'	70" x 235"	79 lbs.

**Note:** Available in special sizes with widths of 3' (35"), 4' (45"), and 6' (70") and lengths up to 60'.

Mats up to 40' are available with universal cleated or smooth backing.

Mats over 40' are only available with smooth backing.