

## WaterHog® Eco Premier Mats

Entrance / Scraper-Wiper / Indoor-Outdoor



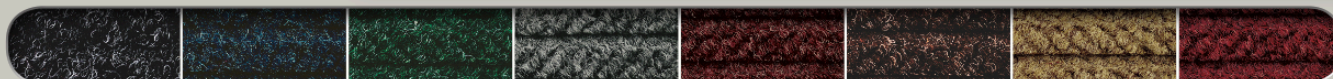
Grey Ash



Maroon

WaterHog Eco Premier mats are durable, stain-resistant mats with a unique bi-level design that traps dirt and moisture, keeping your floors clean, dry, and safe. Eco Premier mats feature an attractive diamond pattern.

- **Clean & Dry** - Raised nubs remove dirt and moisture from shoes and trap it below foot level; water dam border holds up to 1.5 gallons of water per square yard, keeping your floors clean, dry, and safe
- **Eco-Friendly** - PET fabric is made from 100% post-consumer recycled plastic from drink bottles, and SBR rubber backing contains 20% recycled rubber from car tires
- **Safe** - Beveled edges provide a safe transition from floor to mat; certified high-traction by the National Floor Safety Institute (NFSI)
- **Durable** - Reinforced rubber nubs prevent pile from crushing and extend the performance life of the mat
- **Fade & Stain Resistant** - Solution-dyed PET fabric is resistant to staining, dries quickly, and will not fade or rot
- Available in 8 colors with choice of Classic (rubber) border or Fashion (fabric) border
- Feature 78-mil SBR rubber with universal cleated backing or smooth backing; available with optional Anchor Safe® nitrile rubber backing on classic border mat only



170 Black Smoke

171 Indigo

172 Southern Pine

173 Grey Ash

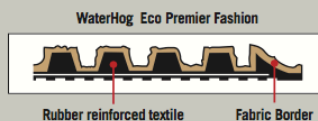
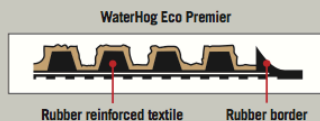
174 Maroon

175 Chestnut Brown

176 Khaki

177 Regal Red





## WaterHog® Eco Premier Mats

Entrance / Scraper-Wiper / Indoor-Outdoor

### Product No. 2295, Classic Border

### Product No. 2297, Fashion Border

Size (ft.)	Size (in.)	Shipping Weight
2' x 3'	24" x 35"	6 lbs.
3' x 4'	35" x 46"	10 lbs.
3' x 5'	35" x 59"	12 lbs.
3' x 6'	35" x 70"	15 lbs.
3' x 8.4'	35" x 101"	20 lbs.
3' x 10'	35" x 118"	23 lbs.
3' x 12.2'	35" x 147"	29 lbs.
3' x 16'	35" x 193"	38 lbs.
3' x 20'	35" x 239"	46 lbs.
4' x 6'	45" x 70"	18 lbs.
4' x 8.4'	45" x 101"	26 lbs.
4' x 10'	45" x 118"	30 lbs.
4' x 12.2'	45" x 147"	37 lbs.
4' x 16'	45" x 193"	48 lbs.
4' x 20'	45" x 239"	59 lbs.
6' x 6'	71" x 71"	28 lbs.
6' x 8.4'	71" x 101"	40 lbs.
6' x 12.2'	71" x 147"	58 lbs.
6' x 16'	71" x 193"	75 lbs.
6' x 20'	71" x 239"	93 lbs.

Special sizes listed below are for ALL quantities.

3' x 23.8'	35" x 281"	45 lbs.
3' x 27'	35" x 326"	63 lbs.
3' x 31'	35" x 371"	71 lbs.
3' x 35'	35" x 416"	80 lbs.
3' x 38.5'	35" x 462"	89 lbs.
3' x 42'	35" x 507"	97 lbs.
3' x 46'	35" x 552"	106 lbs.
3' x 50'	35" x 598"	114 lbs.
3' x 53.5'	35" x 643"	123 lbs.
3' x 57'	35" x 688"	131 lbs.
3' x 61'	35" x 733"	140 lbs.
4' x 23.8'	45" x 281"	69 lbs.
4' x 27'	45" x 326"	80 lbs.
4' x 31'	45" x 371"	91 lbs.
4' x 35'	45" x 416"	102 lbs.
4' x 38.5'	45" x 462"	114 lbs.
4' x 42'	45" x 507"	125 lbs.
4' x 46'	45" x 552"	136 lbs.
4' x 50'	45" x 598"	147 lbs.
4' x 53.5'	45" x 643"	158 lbs.
4' x 57'	45" x 688"	169 lbs.
4' x 61'	45" x 733"	180 lbs.
6' x 23.8'	71" x 281"	109 lbs.
6' x 27'	71" x 326"	126 lbs.
6' x 31'	71" x 371"	144 lbs.
6' x 35'	71" x 416"	161 lbs.
6' x 38.5'	71" x 462"	179 lbs.
6' x 42'	71" x 507"	196 lbs.
6' x 46'	71" x 552"	213 lbs.
6' x 50'	71" x 598"	231 lbs.
6' x 53.5'	71" x 643"	248 lbs.
6' x 57'	71" x 688"	266 lbs.
6' x 61'	71" x 733"	279 lbs.

Mats up to 40' are available with universal cleated or smooth backing.

Mats over 40' are only available with smooth backing.

Anchor Safe® backing available up to 20'. It features 100 mil nitrile rubber and is a 30% upcharge.