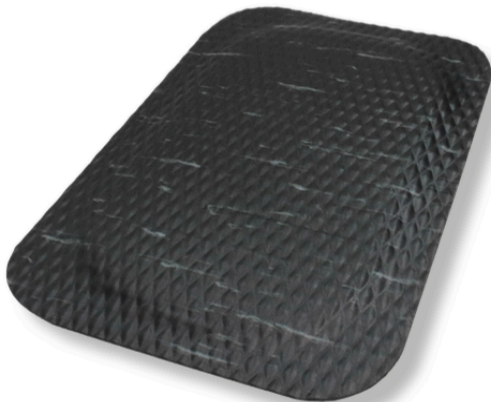


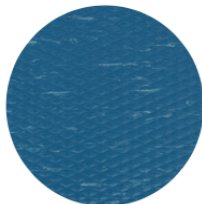
Hog Heaven® Marble Mats

Anti-Fatigue Mats • Indoor

Hog Heaven Marble mats feature the same excellent anti-fatigue qualities of a standard Hog Heaven mat, but with a smooth surface that allows workers to pivot freely.



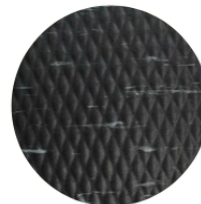
- **Comfortable** – High-density, closed-cell nitrile-blended cushion helps eliminate pressure to the lower back and legs, providing superior comfort; smooth top allows workers to pivot freely
- **Safe** – Certified high-traction by the National Floor Safety Institute (NFSI); sloped edges provide a safe transition from floor to mat
- **Durable** – Surface is molded, not glued, to the nitrile-blended cushion so it will not separate
- **Easy to Clean** – Smooth diamond-patterned vinyl surface is easy to clean
- Available in 5/8" or 7/8" thicknesses and three neutral colors to blend with any décor



Blue Merle



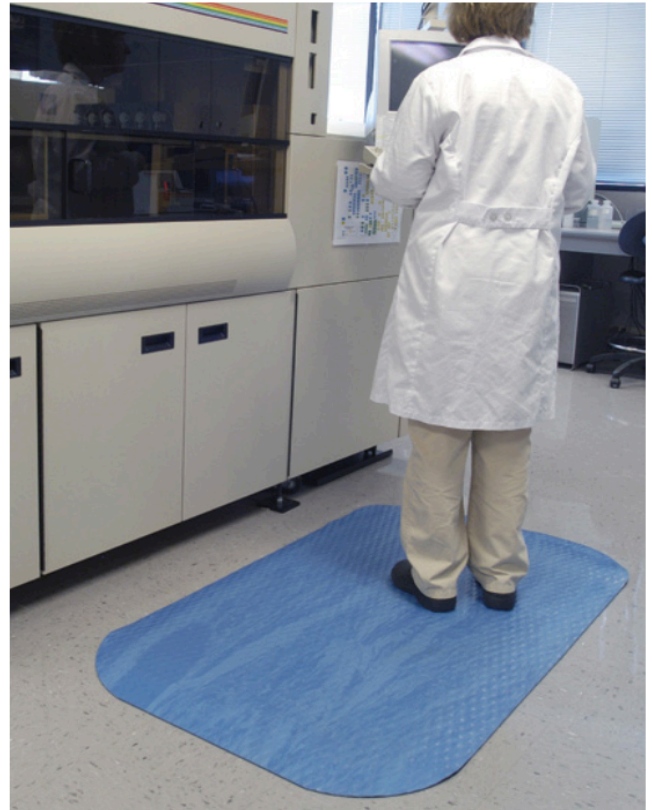
Granite Dusk



Midnight Swirl

Hog Heaven® Marble Mats

Anti-Fatigue Mats • Indoor



Product No. 448 (5/8" thickness)

Size (ft.)	Size (in.)	Shipping Weight
2' x 3'	23" x 32"	8 lbs.
3' x 5'	32" x 58"	20 lbs.
3' x 12'	32" x 143"	45 lbs.
4' x 6'	46" x 70"	31 lbs.

Product No. 449 (7/8" thickness)

Size (ft.)	Size (in.)	Shipping Weight
2' x 3'	23" x 32"	10 lbs.
3' x 5'	32" x 58"	23 lbs.
3' x 12'	32" x 143"	52 lbs.
4' x 6'	46" x 70"	36 lbs.

Note: Custom sizes are available in 3' (32") and 4' (46") widths and whole foot lengths up to 60'.

Mat sizes are approximate as rubber shrinks and expands in conjunction with temperature and time. Tolerable manufacturing size variance is 3-5%.

