

# Recessed Aluminum Rollgrate - 3/4" Perfect Roll-Up Grate Specifications

---

## Recessed Aluminum Rollgrate - 3/4" Perfect Roll-Up Grate Specifications

- Heavy Duty 3/4" Rollup Grate - 6105-T5 aluminum.
- Aluminum Rollgrates are easy to lift and roll up to maintain.
- Overall Recessed Floor Mat Thickness: 3/4"
- Tread Insert Spacing 1" x 1/8" slotted holes for maximum drainage
- 3/4" Recessed Floor Mat Tread rails are spaced 1-1/2" on center and connected with polypropylene thermoplastic rubber hinges/footpads.
- [Insert Options](#) for the Perfect Roll-Up Grate Include:
  - Carpet
  - Poly Brush
  - Vinyl
  - Vinyl Abrasive
  - Serrated Aluminum
- Standard load rating for 3/4" Recessed Mats is 1,000 lbs./wheel rolling load.
- Custom Floor Mats like the Perfect Roll-Up Grate require recessed application.
- Two Frame depth Options from 7/8" (standard applications) to 1-3/32" (deeper pit applications).
- Please consult a sales representative for specific product line drawing profiles.

## FORMAT

Recessed Roll Grate

## Recessed Floor Mats 3/4" Aluminum Roll Grates Installation Instructions

### Grate Instructions: *3/4" Roll-Up* Connecting Sections:

1. Lay both sections next to each other with the tread side down with filler on opposite ends onto a clean surface to prevent scratching or staining. Extra rubber hinge should overlap in the middle.
2. Square up the two sections to guarantee flush edges.
3. With rubber mallet, pound detached hinge into open groove, starting from one end and working your way to the other end.

### Trimming Vinyl Filler:

1. Lay mat in recessed flooring with the tread side up and push on both ends of the traffic direction to compact mat as much as possible.
2. Center the mat inside the recessed portion to ensure equal amounts of filler on either side.
3. Trim filler one of two methods:
  1. Using a small handsaw – Set blade so it will cut 5/16" deep and set up a guide bar to ensure a straight cut.
  2. Using a box cutter – Set guide to ensure a straight cut then score filler multiple times until you have cut through the entire piece of filler
4. Make sure mat fits (compacted) in the recessed portion of the floor.

### Replacing Vinyl Filler:

1. Lay mat with the tread side down onto a clean surface to prevent scratching or staining.
2. Use a screw driver to pop the rubber filler out of the aluminum groove then pull up along the length of the rail.

3. Place replacement filler flush with aluminum rail.
4. Use rubber mallet to pound fin into groove, starting from one end and working your way to the other end.

#### Replacing or Adding Rail(s):

1. Lay mat on a flat surface with tread side down onto a clean surface to prevent scratching or staining.
2. Locate aluminum rail or rails that need replaced and use a screw driver to pop rubber hinge or filler from aluminum groove from one side to add and both sides to replace.
3. Lay new rails in place where they need to be added then put filler or hinge, so they are in line with aluminum groove.
4. Make sure the new rails are flush with both sides of the existing mat.
5. Use rubber mallet to pound fins from the hinge or filler into the groove, starting from one end and working your way to the other end.

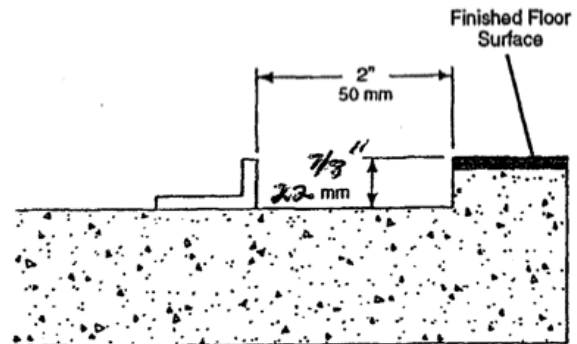
## Installation Guide #450 Frame



### 1. Prepare the floor recess

Prepare a recess in the concrete flooring where the mat will be located. The recess should be at least:

- $\frac{7}{8}$ " (22 mm) deep
- 4" (100 mm) wider than the outside dimensions of the frame — this allows 2" (50 mm) on all sides to maneuver the frame into position



### 2. Drill anchor holes

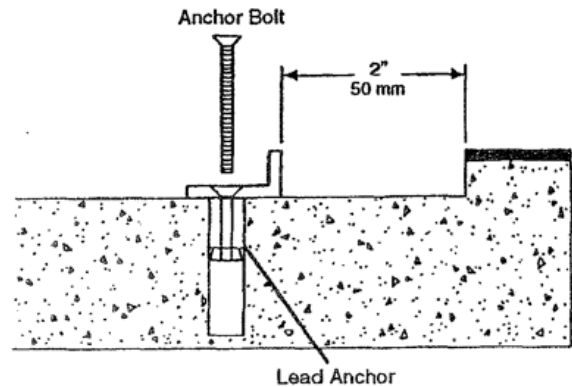
The mat frames should be secured to the concrete floor using anchor bolts into lead anchors that are set into the floor.

Drill holes in the frames at about 2-ft (6-m) intervals for the bolts. Countersink the holes.

Set the frames into the recess at the appropriate locations to position the mat(s). Mark the hole locations on the concrete.

Remove the frames and drill holes in the floor for the anchors.

Install the anchors using an anchor setting tool.



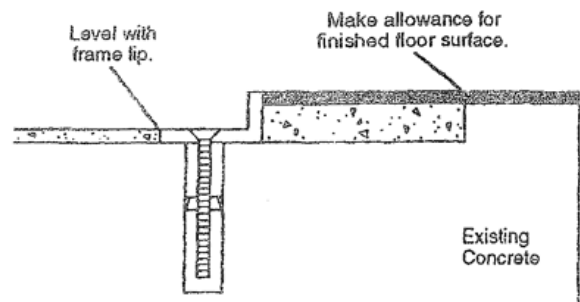
### 3. Secure frames in the recess

Reinstall the frames. Secure them to the floor with  $\frac{1}{8}$ " x  $1\frac{1}{2}$ " anchor bolts into the lead anchors.

**NOTE:** If necessary, shim under the frame sections so that the top edge of the frames is flush with the finished floor surface, and the frames are level.

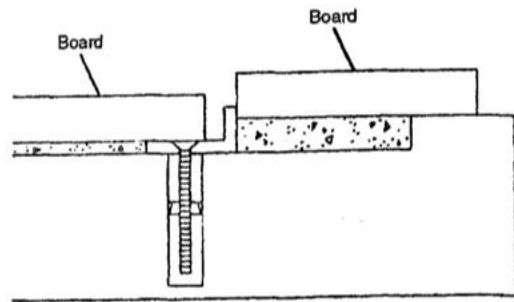
### 4. Pour concrete

Pour concrete (or grout) around the edges and in the center of the frame.

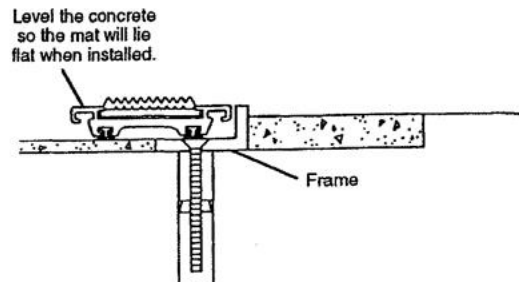


## 5. Level the concrete

Cut a board just slightly shorter than the width of the frame. Use the board to smooth and level the concrete.



- Be very careful that the concrete is absolutely smooth and level with the inside lip of the frame. This will allow the mat to lie perfectly flat and avoid rocking.



## 7. Recheck all dimensions

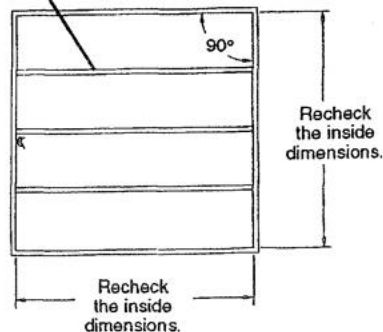
Before the concrete sets, recheck that:

- The frame sides are straight
- The frame corners are at correct angles so the mat will fit properly
- All inside dimensions of the frame are accurate according to drawing measurements

If the frame bows inward, use spreaders inside the frame until the concrete is thoroughly set.

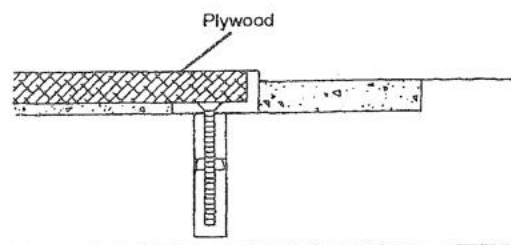
**IMPORTANT:** The mat is made to fit snugly into the frame according to the drawing. Reese cannot be responsible for problems that result from improperly installed frames.

Use spreaders if frame bows inward.



## 8. Protect the frame edges

When the concrete has hardened, install plywood or other material in the recess to protect the frame edges from damage until the mat is installed.



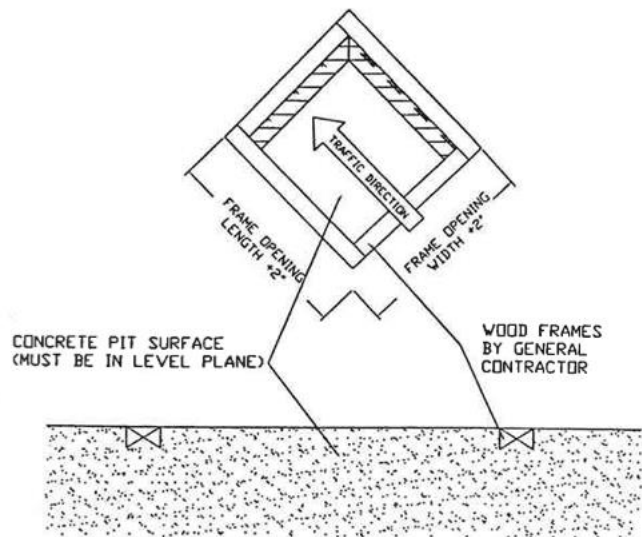
## Installation Guide #448 Roll-Grate Frame

**Note:** Before installation begins, make sure that the traffic direction is correct & the rails run perpendicular to the traffic flow.

### 1. Prepare the floor recess.

Prepare a recess in the concrete flooring where the grate frame will be located. The recess should be at least:

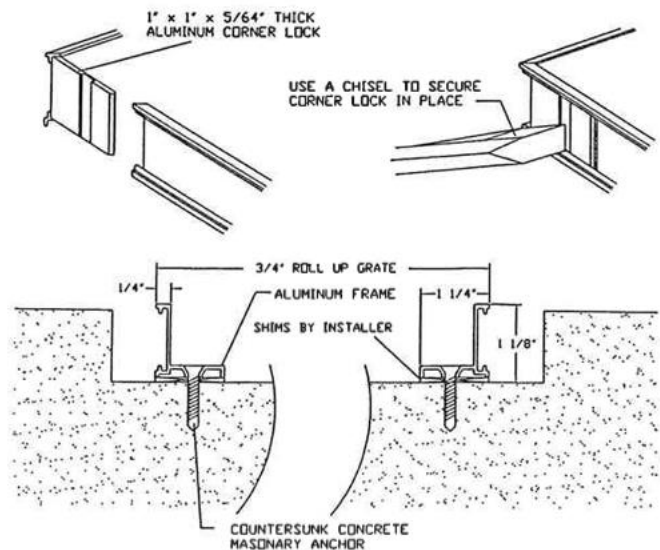
- 1-1/8" deep (subtract finished floor depth from the frame depth – this will be your total block out depth)
- 4" wider than the outside dimensions of the frame – this allows 2" on all sides to maneuver the frame into position



### 2. Assemble frame, drill anchor holes and secure frame in recess.

After the recess has been formed and prepared:

- assemble frame pieces using the corner locks provided at each corner – the frame has been mitered to allow for quick assembly
- set assembled frame into the recessed opening – square and plumb the frame to the opening and finished floor – **NOTE: if necessary, shim under the frame sections so that the top edge of the frame is flush with the finished floor**
- once the frame is in place, drill holes in frame every 2' for the screws and secure using hardware provided

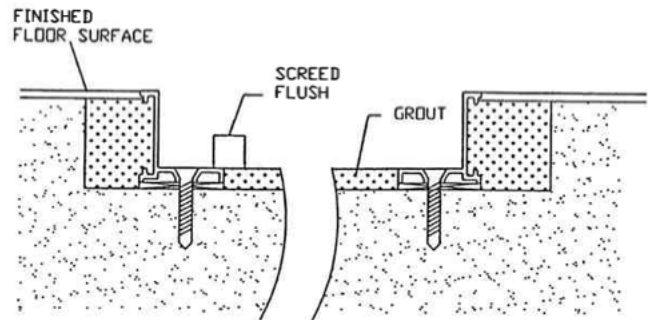




### 3. Pour concrete/grout and level

- pour concrete/grout in the center and around edges flush with the surrounding concrete
- level the concrete/grout in the center of the frame by using a board slightly shorter than the width of the frame

**Note:** Be very careful to insure concrete is smooth and level with the frame - this will allow the grate to lay flat and avoid rocking



### 4. Recheck all dimensions

Before concrete sets, recheck that:

- the frame sides are straight
- the frame corners have correct angles so the grate will fit properly
- all inside dimensions of the frame are accurate according to the drawing measurements

If the frame bows inward, use spreaders inside the frame until the concrete is thoroughly set.

**IMPORTANT:** The grate is made to fit snugly into the frame according to the drawing – Reese cannot be responsible for problems that result from improperly installed frames.

### 5. Protect the frame edges

When the concrete has hardened, install plywood or other material in the recess to protect the frame edges from damage until the grate is installed.

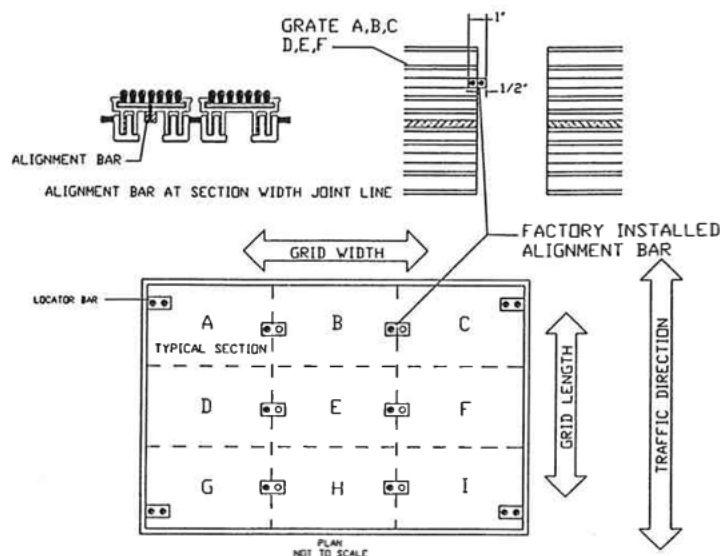
## Installation Guide Roll-Grate

### 1. Install position locator bars on the 448 frame. This will enable the grate to stay flush with the frame.

- To determine where the position bars
- are to be located, all sections in the traffic direction must be joined. To attach the sections, simply drop the aluminum rail from one section on to the vinyl hinge of the adjoining section. Make sure to keep the sections aligned.
- After all sections have been properly assembled, trial fit the grate into the frame. Trim vinyl ends as required for proper fit.
- After the grate is assembled and fits properly into the frame, mark the center of each corner rail on to the frame. This mark will be erased after position bars have been secured.
- Using the mark on the frame, align the position bars on to the frame and drill holes using 1/8" drill bit where screw will attach the bars.
- Using screws provided, attach bars.
- Repeat this process for all corners until all the blocks are secure and the grate fits properly into the frame system.

### 2. For large grates comprised of many sections:

- The factory will provide alignment bars. They will be installed at the factory. These bars will allow the grate rail alignment and still afford the luxury of easy installation and retract ability.
- Align and center the rails on sections B, E, and H so that they align with the bars on sections A and C, D and F, and G and I.





Carpet Inserts



Charcoal



Black



Midnight



Sandy



Espresso



Java



Blue



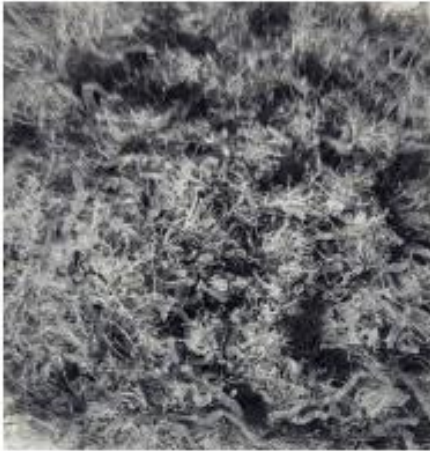
Mauve



Black Cherry



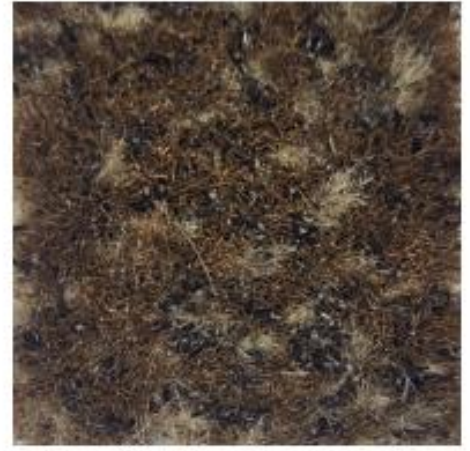
**Poly-Brush Colors**



Grey



Black



Brown

**Vinyl Inserts**



Black



Grey



Beige



Blue



Brown

**Serrated Aluminum Treads**

**\*\*only available if you alternate with a different tread**





## **Maintenance Instructions for Carpet Treads**

The carpet insert in your Perfec Clean entry mat or grate system will retain its beautiful new appearance for many years if a simple plan of regular maintenance is followed. It is important to establish this plan when the product is new, because the longer the soil remains in the carpet, the more difficult it is to remove. The type and schedule of maintenance is dependent upon the location, the amount of traffic and the type of soil. We recommend the following:

1. **Inspection for spots and stains** should be a daily routine. Remove all spots immediately to avoid permanent damage to carpet fibers. If the spill is a liquid, blot up as much as possible with a soft absorbent paper towel or clean white cloth. If the spill is semi-solid, scrape with a spoon or spatula and then blot with a damp sponge. Work from the edge of a spot to the center to keep the problem from spreading.

Two types of spot remover can be used. For oily stains such as tar, paint, grease, etc. a nonflammable dry cleaning solvent works best. However, caution should be taken to first test for color fastness. Put a few drops in an inconspicuous area, then press the area with a clean white cloth for 10 seconds. If there is evidence of loose dye, do not use. For other spills such as coffee, tea pet stains, etc. a dry soil extractor can be used. Follow manufacturer's directions for this product.

If these methods are unsuccessful, replacement strips are available.

2. **Vacuum Schedule:** A heavy duty vacuum cleaner with a rotating brush is the most effective way to routinely clean the carpet in your entry mat or grate system. By vibrating the fibers, this type of vacuum not only cleans the surface of the carpet, but removes soil that is embedded into the pile. It also aids in keeping the pile upright for longer lasting beauty. Clean heaviest traffic areas weekly or as necessary. Caution should be exercised when vacuuming near the carpet insert ends to avoid pulling the strips out of the tread rails.

1. **Carpet Cleaning Schedule:** Carpet should be deep cleaned when vacuuming will no longer remove the soil. This may be monthly, quarterly, or longer depending on soil and traffic conditions. Systems such as aerosols, foams, hot water extraction, or shampoo will work, but may leave a sticky detergent residue which will accelerate resoiling. Be extremely careful when selecting a method of this type. We recommend a dry cleaning system for several reasons:
  - a. Delayed resoiling
  - b. Convenience. Carpet remains dry allowing you to clean when and where you want.
  - c. Safe. No carpet damage from dye bleeding and reduces possible accidents caused by slipping on wet carpet.

## **Maintenance Instructions for Serrated Aluminum Treads**

Your Perfec Clean serrated tread mat or grating will retain its handsome appearance for years with a minimum amount of maintenance. The location and traffic load will determine the frequency of cleaning required. We recommend the following cleaning procedures:

The serrated aluminum tread should be cleaned as necessary with a soft bristle brush or a damp mop using mild detergent.



## **Maintenance Instructions for Polybrush Treads**

### **Weekly**

**Vacuum** with upright type vacuum equipped with good beater brush. May use a stiff hand brush to remove lodged debris not removed by vacuuming.

**Oil based soil and stains** may be removed using a solvent based carpet cleaner.

**Water based soil and stains** may be removed using a all-purpose neutral cleaner.

### **Monthly**

Shampoo with rotary shampooer, extractor, or other commercial cleaning machine. More frequent cleaning ( weekly or monthly ) is dependent on the amount of foot traffic utilizing your entry mat.

For more unusual situations, such as store remodeling, an immediate shampoo cleaning may be deemed necessary upon completion of entire project.

### **Note:**

The above brush tread maintenance instructions are suggestions to maintain and enhance the look of your entry mat. Conditions regarding weather, foot traffic, and general use will vary.

## **Maintenance Instructions for Vinyl Treads**

The vinyl Insert tread should be cleaned as necessary with a soft bristle brush or damp mop using a mild detergent and water, to remove soil. Avoid using strong solvents, especially petroleum based as they mar the vinyl surface.

The mat or grate sections should be removed from their recess and this area cleaned periodically to remove accumulations of dirt trapped by the Perfec Clean system. The location and traffic load will determine the frequency of cleaning required

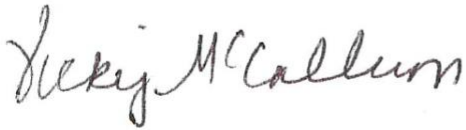
---

**LEED DATA**  
**ENTRANCE SYSTEMS**

---

Recycled Material

- Aluminum material in our entrance systems contain a minimum average of 50% pre-consumer recycled material.
- Our santoprene and poly in the hinge of our rubber hinged mat contains an average of 80% pre-consumer recycled material.
- There is an average of 30% pre-consumer recycled material in all our vinyl fillers, borders, and vinyl inserts.
- Our abrasive brush and carpet inserts contain 50% pre-consumer recycled material for the backing of the insert.
- There is not any post consumer recycled material in our products.
- All Reese roll up mats and grates comply with EQ credit #5.



Vicky McCallum  
Office Manager  
Reese Enterprises, Inc.



## Claims and Warranty Information

### Claims:

- Goods in transit are at the risk of the purchaser for loss or damage.
- Claims for shortage or improper fulfillment of orders must be made within two weeks from the date of receipt.
- If goods appear defective, the purchaser should discontinue their use and notify Mad Matter at once so the matter can be investigated.
- Mad Matter does not assume liability for consequential damages or delays and claims for labor will not be allowed.
- Mad Matter, at its option, shall repair or replace any part or component part which shall prove defective to the original purchaser.

### Warranty:

- All Mad Matter weatherstrip and threshold products are guaranteed for a period of FIVE YEARS from the date of delivery against defects in material and workmanship.
- Self-adhesive weatherstripping must be installed within six months of the delivery date in order for the warranty to be valid.
- Defective goods will be replaced or repaired at the discretion of Reese Enterprises. No claims for damage incurred or work done thereon will be allowed.
- Cost of replacement shall not exceed the original purchase price.
- Warranty claims must be submitted in writing within the warranty period.
- Reese does not assume liability for defects or damage arising from improper installation, lack of recommended maintenance, misuse, modifications, use in incompatible products, or ordinary wear and tear.

### Cancellation Charges:

- Orders for special products and non-standard sizes are subject to a cancellation charge based on labor and material used prior to cancellation.

### Return Goods:

- No merchandise will be accepted for return without prior written approval.
- Specially fabricated products, non-standard drilling, and non-standard sizes are not returnable.
- Returned material must be of a recent sale (less than a year from the invoice date), standard stock sizes, and in resalable condition.
- All returns are subject to a 35% restocking charge plus freight charges.